



master gardener connection

A JOINT MONTHLY PUBLICATION FROM THE MASTER GARDENERS OF KING
COUNTY AND THE MASTER GARDENER FOUNDATION OF KING COUNTY

June 2025

In This Issue:

- Foundation board election results
- Our volunteer's 2024 by the numbers
- How to get involved with Green School
- A snapshot of the Ronald McDonald House Outreach Garden
- Trainees learn pruning from the pros at Plant Amnesty
- New work abounds at Kenmore Rhododendron Park
- EMGs celebrate Earth Day with the community
- Animal Acres crew helps a good cause in Lake Forest Park
- How we can help save the bees
- Our monthly book selection, upcoming events, education opportunities, and more!

Foundation Board of Directors Election Results



By Joan Baldwin, Extension Master Gardener and Foundation Board President

The votes are in! Three current Directors on the Master Gardener Foundation of King County Board have been re-elected to a second term, including Phil Fordyce, Nancy Marshall, and Lin Provost. Five newly elected Directors, including Lynda Firey-Oldroyd, Marie Kurka-Brown, Jeremy Miller, Chelsea Petersen, and Mary Ellen Stone, begin their first terms on June 1.

Together with current Directors Joan Baldwin, Trish Bloor, Linda Kaufman, Suzi O'Byrne, Dawn Rubstello, Gary Scheider, and Daryl Schlessler, this makes up the Foundation's 2025-26 Board of Directors.

Thank you to the 196 members of the Foundation who voted in this election.

[Read More About the Results](#)

Our 2024 by the Numbers

By Sarah Moore, WSU Extension King County Master Gardener Program Coordinator



WSU EXTENSION
King County

As a part of WSU Extension, the King County Extension Master Gardeners have a responsibility to extend knowledge to the community. Fortunately, this is a responsibility that our volunteers gladly take on, and the 2024 year in numbers shows how committed we are to that work.

In 2024, our 611 EMG volunteers engaged with 21,488 residents, giving plant advice, teaching classes, and demonstrating gardening techniques in our Demonstration Gardens which serve as living classrooms.

[Read More About Our 2024 Impact](#)



Two ways to get more involved with gardening

By Sarah Moore, WSU Extension King County Master Gardener Program Coordinator

Are you interested in becoming an Extension Master Gardener? Mark your calendar: **our application process starts earlier this year than in the past, with applications opening on July 1 and closing August 31.** Our class begins in October and will have lots of new, updated content. Our new volunteers will be more prepared than ever!

If you've always wanted the Master Gardener knowledge, but not been able to commit to the volunteer service requirements, then the Washington Gardener Course offers the same in-depth rigor as the volunteer program without service hours. Complete the class, build your skills, and earn a certificate.

[Learn More about Green School](#)

Creating Beautiful Space for Children and Families at Ronald McDonald House Outreach Garden

By Extension Master Gardener Andrea Borning



Ronald McDonald House Outreach Garden is a demonstration garden that isn't *technically* a demonstration garden, but still serves a critically important role in supporting our community.

The Ronald McDonald House is a nonprofit that provides free housing for families with children receiving treatment for serious medical conditions at the Seattle Children's Hospital. The Ronald McDonald House Outreach Garden is supported by a dedicated group of Extension Master Gardeners who maintain a beautiful collection of individual focus gardens for the more than 100 families who live onsite, as well as their volunteers.

[Read More About the Garden](#)



Hands-On Pruning Tutorial for EMG Interns at Highline SeaTac Botanical Garden

By Sarah Moore, WSU Extension King County Master Gardener Program Coordinator

On April 13, three wonderful gardening organizations came together at Highline SeaTac Botanical Garden. Plant Amnesty taught a hands-on pruning workshop to WSU Extension King County Master Gardener trainees, using ornamental plants throughout the garden to demonstrate techniques used to prune cane-growing plants, roses, small trees, and mounding shrubs.

[Read More About the Workshop](#)

EMGs Support Program Priorities through Education at Kenmore Rhododendron Park

By Extension Master Gardener Sharon O'Grady

What a full day of fun events and discussion occurred at Kenmore Rhododendron Park on Wednesday, May 7! We started the morning with a small group of WSU Extension King County Master Gardeners investigating the status of the rhododendrons we attempted to air and ground later last year. We also had a marvelous talk on dahlias and spent an hour in discussion with leaders from community groups about collaborating on Extension Master Gardener Program priorities.



[Read More About the Event](#)

Celebrating Earth Day at the Northwest African American Museum with the Seattle Department of Neighborhoods



By Extension Master Gardener Gia Parsons

In the heart of Seattle's Central District, the Northwest African American on a Saturday in April, gardeners from across the city gathered for an Earth Day celebration hosted in partnership with the Seattle Department of Neighborhoods' P-Patch Program. The annual event featured gardeners of all backgrounds coming together to share stories, swap advice, and dig deep as they celebrated gardening know-how, culture, and community.

[Read More About the Earth Day Celebration](#)

Animal Acres Master Gardeners Help Pack the Park

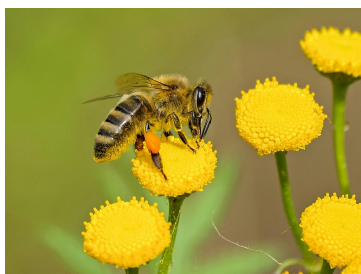
By Extension Master Gardener Linda Holman

Lake Forest Park packed in crowds for a good cause one weekend in May, and the WSU Extension King County Master Gardeners at Animal Acres Demonstration Garden were a big part of the effort.

The city, as part of its Pack the Park event on Saturday, May 10, hosted a 5k walk/run and community picnic with live music at Pfingst Animal Acres Park. This event raised \$3,000 to support the Shoreline School District in their efforts to provide students and other members of the community with reliable action to nutrition.



[Read More About Pack the Park](#)



Building Community Through Gardens and Gardening: Save The Bees

By Extension Master Gardener Lynda Firey-Oldroyd

Last month we focused on the importance of building community with butterflies, by creating butterfly-friendly gardens. The article was spurred by a recent study that showed between 2000 and 2020, total butterfly abundance in the US declined 22%. Similarly, the bee population is in serious decline and deserves a moment of consideration.

[Learn How to Help Save the Bees](#)



Growing Groceries Corner On Pause for the Season

By Extension Master Gardener
Carol Johnson

We wanted to let you know that Growing Groceries Corner will be on hiatus for the remainder of the 2025 growing season. The entire team is hard at work on our volunteer work with the WSU Extension King County Master Gardener Program, our volunteer work for other non-Program-affiliated gardens, and our work in our own personal gardens! We will miss connecting with each of you, our readers, about assorted topics, but will return with reports of how all of that amazing work goes during our busy growing season this year. See you soon!

Quick Links

[Become a Master Gardener](#)

[MGF Washington State](#)

[GivePulse Login Page](#)

Upcoming Events

[PNW Garden Savvy](#)

[Growing Groceries](#)

[Education Events for the Public
and Master Gardeners](#)



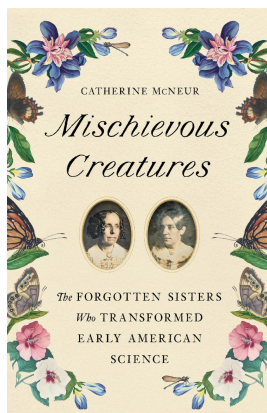
Sign up for PNW Garden Savvy Before Summer Break

By Extension Master Gardener Janile Martin

Last call, gardeners: Deer Resistant Gardening with Extension Master Gardener Adam Romero on June 7 will be the last PNW Garden Savvy class in Series 2! There will be no classes over the summer months. However, when you're not outside enjoying some wonderful PNW summer weather, you can earn continuing education hours and catch up by watching the recorded classes from both Series 1 and 2.



[Learn More and Sign Up](#)



Elisabeth C. Miller Library Selection: "Mischievous Creatures"

The mischief of Elizabeth
and Margaretta Morris, the
sisters of the title of this

Helpful Links

Browse our gardening
tip sheets.

[Garden Tip Sheets](#)

book, was seen as serious; they were challenging the exclusive male 19th century science establishment as they sought opportunity and recognition for their work. This book shows in impressive detail how personal contacts, correspondence, and hard work allowed these two women to participate in the development of science in America in the generation after the Revolution.

This book was nominated for the 2025 Annual Literature Award by the Council on Botanical and Horticultural Libraries, the professional association for plant science librarians.

[Read the Review](#)

Some tip sheets are available in six languages.

[Translated Tip Sheets](#)

Find our clinic and garden locations

[Program Map](#)

Continuing Education Opportunities

Find more gardening classes!

Visit our [Education](#) page to find more horticulture and home gardening classes available to the public from our Growing Groceries and PNW Garden Savvy series.

Need Master Gardener CE?

Extension Master Gardeners can visit our [Master Gardeners Only](#) page for a full list of approved content eligible for credit toward annual Continuing Education requirements.

Growing Groceries Workshops

Growing Groceries classes take place on select Wednesdays at 7 p.m. via Zoom. Visit the [Growing Groceries](#) page for information and to register.

Summer Starts for Fall and Early Spring Harvests

Presented by Extension Master Gardeners Andrea Borning and Karen Adams
Wednesday, June 11 at 7 p.m. | Virtual

Caring for Community at Master Gardener Demonstration Gardens

Presented by several Extension Master Gardeners
Wednesday, June 25 at 7 p.m. | Virtual

PNW Garden Savvy (formerly BDG Workshops)

PNW Garden Savvy classes take place on select Saturdays at 9:30 a.m. via Zoom. Visit the [PNW Garden Savvy](#) page for more information and to register.

Deer Resistant Gardening

Presented by Extension Master Gardener Adam Romero
Saturday, June 7 at 9:30 a.m. | Virtual

WSU Master Gardener Online Workshops

These are free weekly online programs presented by WSU Master Gardeners.
No need to register, just pop in.

Zoom Link: <https://wsu.zoom.us/j/7756056320>

Meeting ID: 775 605 6320

Password: 12345

For help, call Gary Fredricks at garyf@wsu.edu or 360-577-3014 Ext. 3.

Using Bio-solids on your Garden

Presented by Joe Jordon and Debbie Stanley from Three Rivers Wastewater Authority

Tuesday, June 3 at 12 p.m. | Virtual

Controlling Moles

Presented by Extension Master Gardener Sara Clark

Tuesday, June 10 at 12 p.m. | Virtual

Vertical Gardening

Presented by Extension Master Gardener Marilee Hertig

Tuesday, June 17 at 12 p.m. | Virtual

Plant Bullies to Avoid Buying at the Nursery

Presented by Extension Master Gardener and Cowlitz County Noxious Weed Coordinator Jennifer Mendoza

Tuesday, June 24 at 12 p.m. | Virtual

Events & Coming Attractions

MGFKC Board Meeting on Thursday, June 12 from 7 - 8:30 p.m. via Zoom.

More information: kingcounty.mastergardenerfoundation.org/board.

Zoom Link: <https://us06web.zoom.us/j/88172076722>

Meeting ID: 881 7207 6722

One tap mobile - +12532158782,,88172076722#

Dial in - +1 253 215 8782 Meeting ID: 881 7207 6722

Children's Day at the Garden will take place at Neely-Soames Homestead Demonstration Garden on Saturday, June 28 from 11 a.m - 2 p.m at 5311 S 237th Place in Kent. Children of all ages will be encouraged to explore a magical fairy garden, hunt for pollinators, and uncover the amazing world of worms.

**Contributing to "Master
Gardener Connection"**

**Master Gardeners: Don't
unsubscribe from all mailings!**

Do you have content you'd like to submit for this newsletter? For more information about the process, or to submit items for consideration, contact "Master Gardener Connection" Editor Kayah Swanson at kayah.swanson@mgfkc.org.

The deadline to submit is the 15th of each month.

If you wish to unsubscribe, remember that **all active Master Gardeners in King County are expected to subscribe to the current year's "KC Master Gardeners" Email List** to continue receiving information about Program activities, updates, and recertification notices, so don't unsubscribe from that! Other email lists are optional.

Was this newsletter forwarded to you?
Sign up to receive your own monthly copy!

Email Sign Up

Land Use Acknowledgement for the King County Master Gardener Program

We acknowledge that we are gathered on the sacred lands of the Coast Salish Peoples who have lived along the shores of the Central Salish Sea since time immemorial. We honor all First Peoples indigenous to the place we now call King County – their ancestors and descendants who have cared for these sacred lands and waters for thousands of years. We acknowledge the sovereignty of Coast Salish Peoples and honor their history, language, knowledge, cultural traditions, and longstanding stewardship of the lands on which we stand and cultivate today. We give thanks to the Duwamish, Muckleshoot, Snoqualmie, Stillaguamish, Suquamish, and Tulalip Tribes for sharing their ancestral lands and watersheds with us, and we embrace our responsibility to help protect and restore them for future generations.



The "Master Gardener Connection" is a joint publication from the King County Master Gardener Foundation, a 501(c)(3) nonprofit, and the WSU Extension Master Gardener Program in King County to provide research-based education about urban horticulture to the residents of King County. WSU Extension programs and employment are available to all without discrimination. Evidence of noncompliance may be reported through your local WSU Extension office.

Follow us on social media!



Master Gardener Foundation King County | c/o WSU Extension King County 560 Naches Avenue SW, Suite 130 | Renton, WA 98057-2219 US

[Unsubscribe](#) | [Constant Contact Data Notice](#)



Try email marketing for free today!