




1


Notices

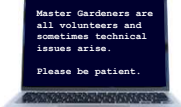
Master Gardeners provide a multitude of resources for home gardeners. This gardening information is research-based, available to the public, and focused on environmentally friendly and sustainable gardening practices.



We are grateful for this land – the ancestral homeland of the Duwamish, Stillaguamish, Suquamish, Tulalip, and Coast Salish Peoples. We pay our respects to the Elders and members of these nations, both past and present.

For more, go to:





2

Tonight's Topics

- Introduction to SWHS Culinary Arts Garden
- Culinary Arts Class
- Improving Accessibility for Special Needs and Medically Fragile Students
- Work Experience Class

3

Introduction to SWHS Culinary Arts Garden

Shorewood High School, Shoreline WA



4

Introduction

Shorewood High School provides public education for 2000 students. The garden is in a courtyard with about 25 raised beds for vegetables and fruits. In addition, there are beds for Natives, Pollinators, Herbs, Ornamentals, Tea plants.

Culinary Arts Garden is open to all students

Open to the public outside of school hours.



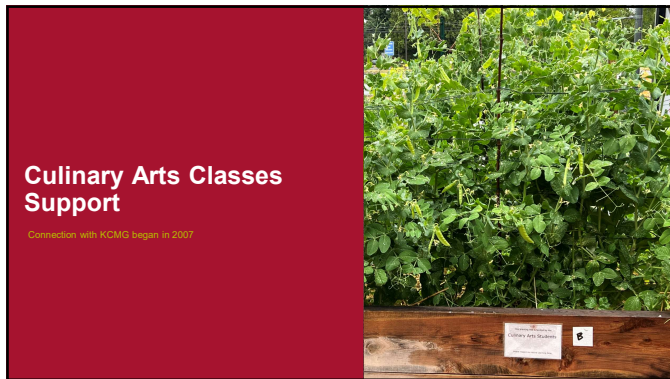
5

Similar to other Demo Gardens

- Focus on growing produce to donate to the Local Community
- Creating positive Connections
- Education for all



6



7



8



9

CA Class topics and practical work in the garden:

- Soils
- Seeds
- Worms and worm bin
- Seed selection
- Soil mixing
- Seed planting
- Fall Harvest and Farmers Market
- Fall planting
- Winterizing the Garden
- Spring harvest and Farmers Market



10

Summer produce

- Donated to a local church that provides meals for food insecure
- Some produce MGs harvest and store for the upcoming school year.



11

Improving Access for Medically Fragile and Special Needs students

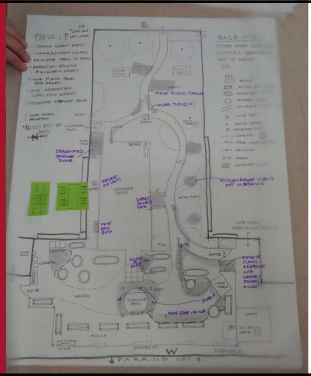
collaboration began 2023



12

Gathering info, generating a wide range of ideas

Meetings and lots of discussion between staff and MGs



13

Little Free Library: Before and After

- Unclear what it is
- Hard to access
- Turned and labelled and filled with gardening and cooking books



14

Games Table: Before and After

- Hoop frame and mulch block access to the games table
- Removed barriers and added ramp
- Weeding is on the To Do list!



15

Compost Bins: Before and After

- Disorganized
- Mulch and edging create barriers
- Re-organized and labelled
- Mulch layer removed to gravel base



16

Some improvements required more effort and:

- Time
- Research
- Permission from Shoreline Public School District (thank you!)
- Funding options
- Sourcing material and deliveries
- Gathering volunteers for hard labor
- Planning
- Approval to change the Garden's Maintenance Style (thank you, MGs!)

17

Connector pathway: Before and After

- No direct, safe path
- Most significant positive impact



18

ADA Veggie Bed: Modified for our students

- Raised to desired height
- Pond liner with drainage holes
- Signs to educate all visitors



19

Changing the Garden's Maintenance style

- Cottage Garden-like. Are those weeds or volunteers or pollinator plants?
- Designated Pollinator Bed



20

After the Improved Access, on to creating the Work Experience Class

In Class and In Garden began Spring 2025




21

15 students, 15 staff, 4 MGs. 1x week for 8 weeks.

What is a Work Experience Class?

Social (soft) skills and job training for Special Needs students



22

WE Class topics and practical work in the garden:

- Spring clean up
- Planting
- Weeding
- Watering
- Thinning
- Harvesting
- Tending compost
- Cleaning tools
- Netting apples
- Creating new pollinator bed



23

Accomplishments

- Planted potatoes
- Planted peas
- Learned a lot- students, staff, MGs
- One student wants to work in a plant nursery
- Harvested produce for the Culinary Arts classroom use
- Harvested all herbs for Spring Farmers Market, including cutting, bundling, tagging and labelling
- Increased confidence for all involved
- MGs looked forward to each week with excitement

- Lead teacher asked us to return in the fall - beginning 2nd week of school!

24

Take another look at your garden...

▪ Before

▪ After



25



Thank You!


And now for some closing announcements before questions...

26


Resources

- The Conway School of Landscape Design www.csld.edu
- Seattle Children's PlayGarden www.seattleplaygarden.org
- Sky Nursery www.skynursery.com
- American Horticulture Therapy Association www.ahta.org
- University of Washington Landscape Architecture: Therapeutic Gardens www.guides.lib.uw.edu
- Garden photographs by Katherine Anderson

27



Master Gardener Resources



Ask a Master Gardener

Visit: <https://extension.wsu.edu/king/ask-a-master-gardener>

Become a Master Gardener

For information on King County Master Gardener training (including signing up for the email notification list), visit: <https://extension.wsu.edu/king/gardening/become-a-master-gardener>

Applications for the 2026 class will open in September 2025

28

Thank you for the support!



is brought to you by



WASHINGTON STATE UNIVERSITY
EXTENSION

King County Master Gardener Program

<https://extension.wsu.edu/king/gardening>

- Demonstration Gardens
- Plant Clinics
- Education Outreach
- Science-based Publications



Master Gardener Foundation of King County

<http://www.mgfk.org>

- Fundraising for these programs

More information about growing groceries:
<https://kingcounty.mastergardenerfoundation.org/education/gg/>

29

Questions?



30
